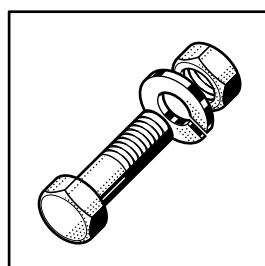


HX

Spare Parts
Pièces Détachées
Ersatzteile
Onderdelen



Electrical components listed in this catalogue are rated for the following supply voltages:

Les composants électriques énumérés dans ce catalogue sont prévus pour les tensions suivantes:

Die in diesem Katalog aufgeführten Elektroteile beziehen sich auf folgende Anschlußspannungen:

De in deze catalogus afgebeelde elektrische componenten zijn geschikt voor de volgende aansluitspanningen:

220V / 50Hz / 1P
220V / 50Hz / 3P
240V / 50Hz / 1P
240V / 50Hz / 3P
380V / 50Hz / 3P
415V / 50Hz / 3P

For other voltages, refer to the wiring diagram shipped with the machine.

Pour d'autres tensions, se référer au schéma électrique envoyé avec la machine.

Bei nicht aufgeführten Anschlußspannungen bitte den, der Maschine beigelegten, Schaltplan beachten.

Voor eventueel andere aansluitspanningen, raadpleeg het elektrische schema welke zich bij de machine bevind.

Contents

Frame and Panels	4
Tank and support	5
Filters and tankheating	6
Booster	7
Wash pump	9
Rinse pump	10
Wash and rinse system	11
Fill, anti-siphon-device and drain	12
Softener	13
Fill and regeneration pipework	14
Dispensers	15
Front base	16
Control panel	17
Electrical parts	19

Inhalt

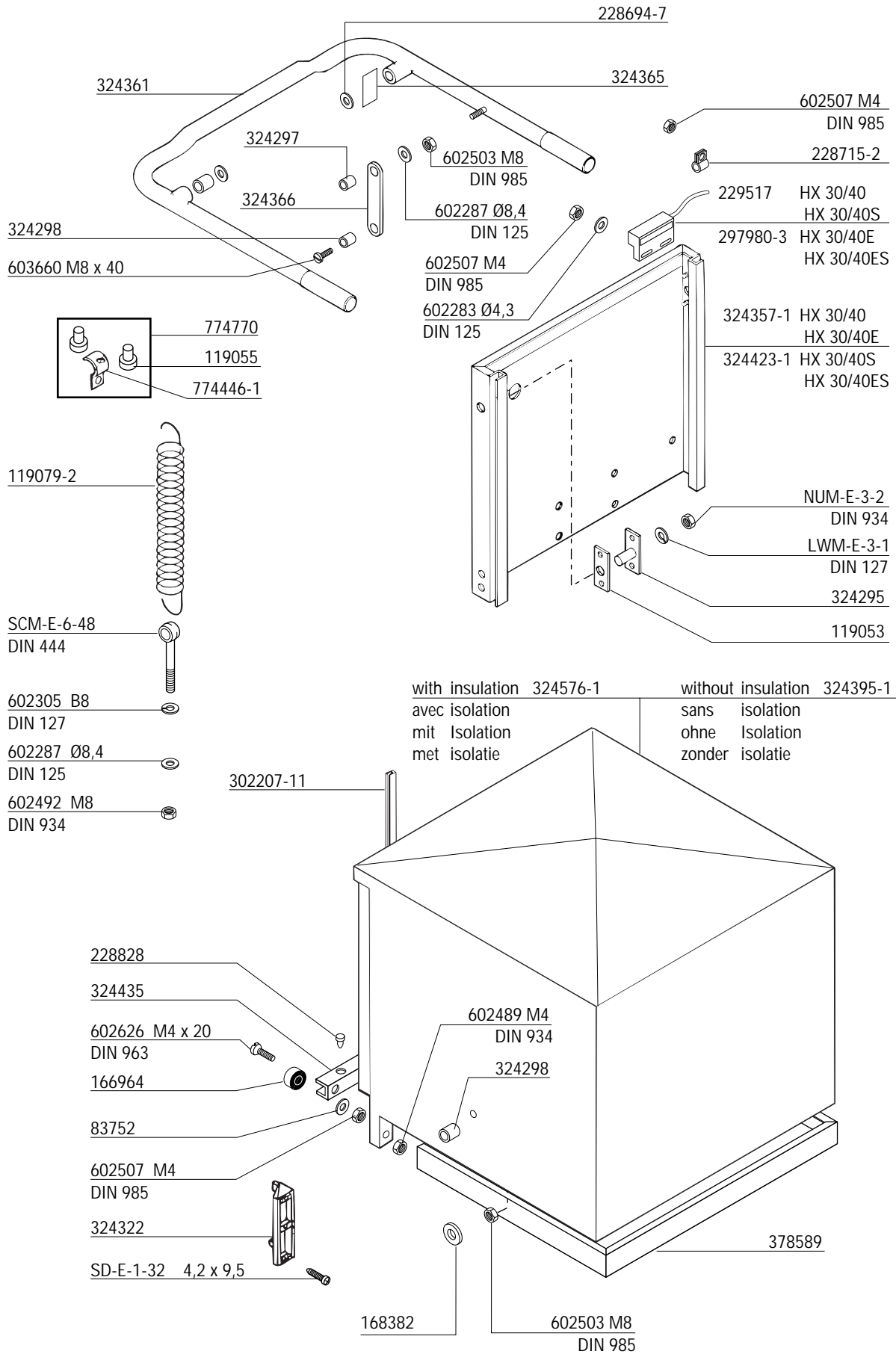
Gestell und Verkleidungen	4
Tank und Untergestell	5
Siebe und Tankheizung	6
Erhitzer	7
Waschpumpe	9
Klarspülpumpe	10
Wasch- und Klarspülsystem	11
Füllung,Rücksaugverhinderer und Ablauf	12
Enthärter	13
Füll- und Regenerierleitung	14
Dosiergeräte	15
Untere Frontverkleidung	16
Schalterblende	17
Elektroteile	19

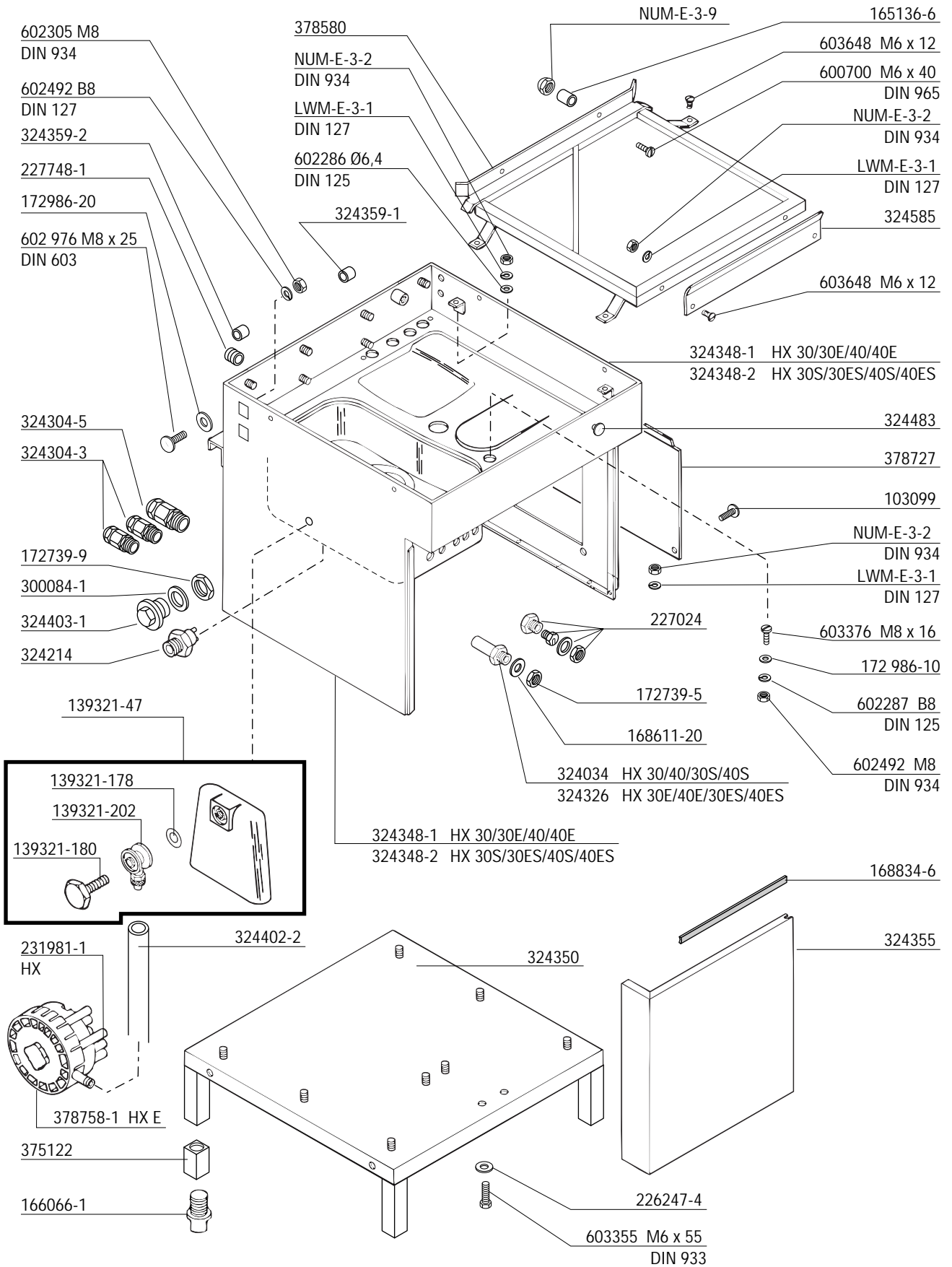
Sommaire

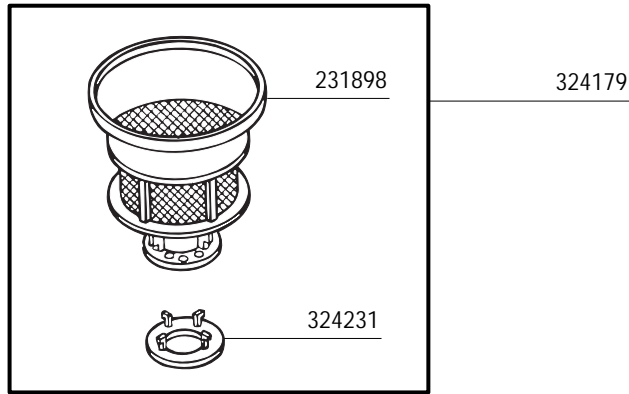
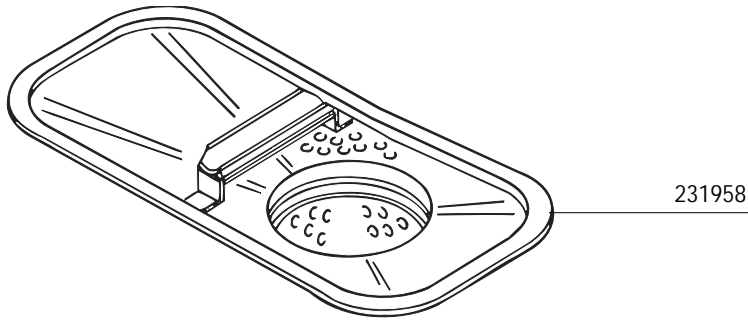
Châssis et Panneaux	4
Bac et socle	5
Filtres et chauffage du bac	6
Chaudière	7
Pompe de lavage	9
Pompe de rinçage	10
Système de lavage et de rinçage	11
Remplissage, brise-vide et vidange	12
Adoucisseur	13
Tuyauterie de remplissage	14
Doseurs	15
Panneau frontal inférieur	16
Panneau de commande	17
Pièces électriques	19

Inhoud

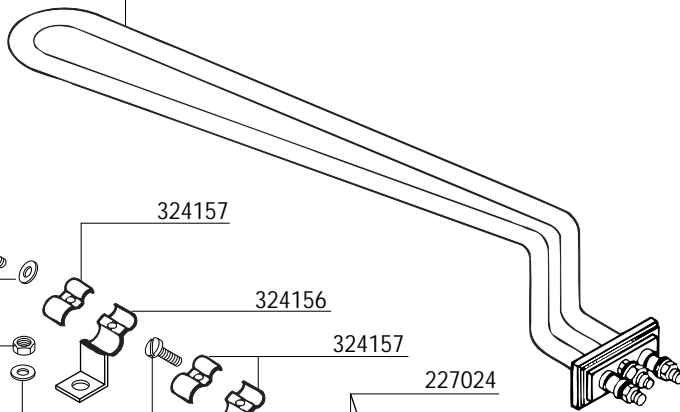
Frame en Panelen	4
Tank en uitbreiding	5
Zeven en tankverwarming	6
Booster	7
Waspomp	9
Spoelpomp	10
Was- en spoelsysteem	11
Water toevoer, vacuumbreaker en afvoer	12
Ontharding	13
Vul- en regenerieerleiding	14
Doseerapparaten	15
Onder front panel	16
Schakelpanel en elektrische delen	17
Elektrische delen	19







231982-10 440 V 610 W
 231982-9 254 V 610 W



602646 M3 x 10
 DIN 84

602294 B3
 DIN 127

602489 M4
 DIN 934

602308 B4
 DIN 127

602646 M3 x 10
 DIN 84

602294 B3
 DIN 127

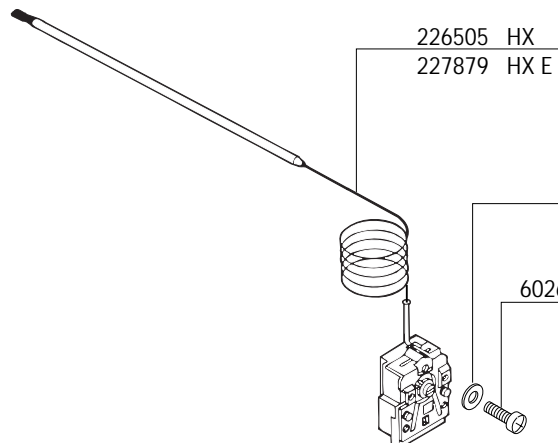
602488 M3
 DIN 934

324157

324156

324157

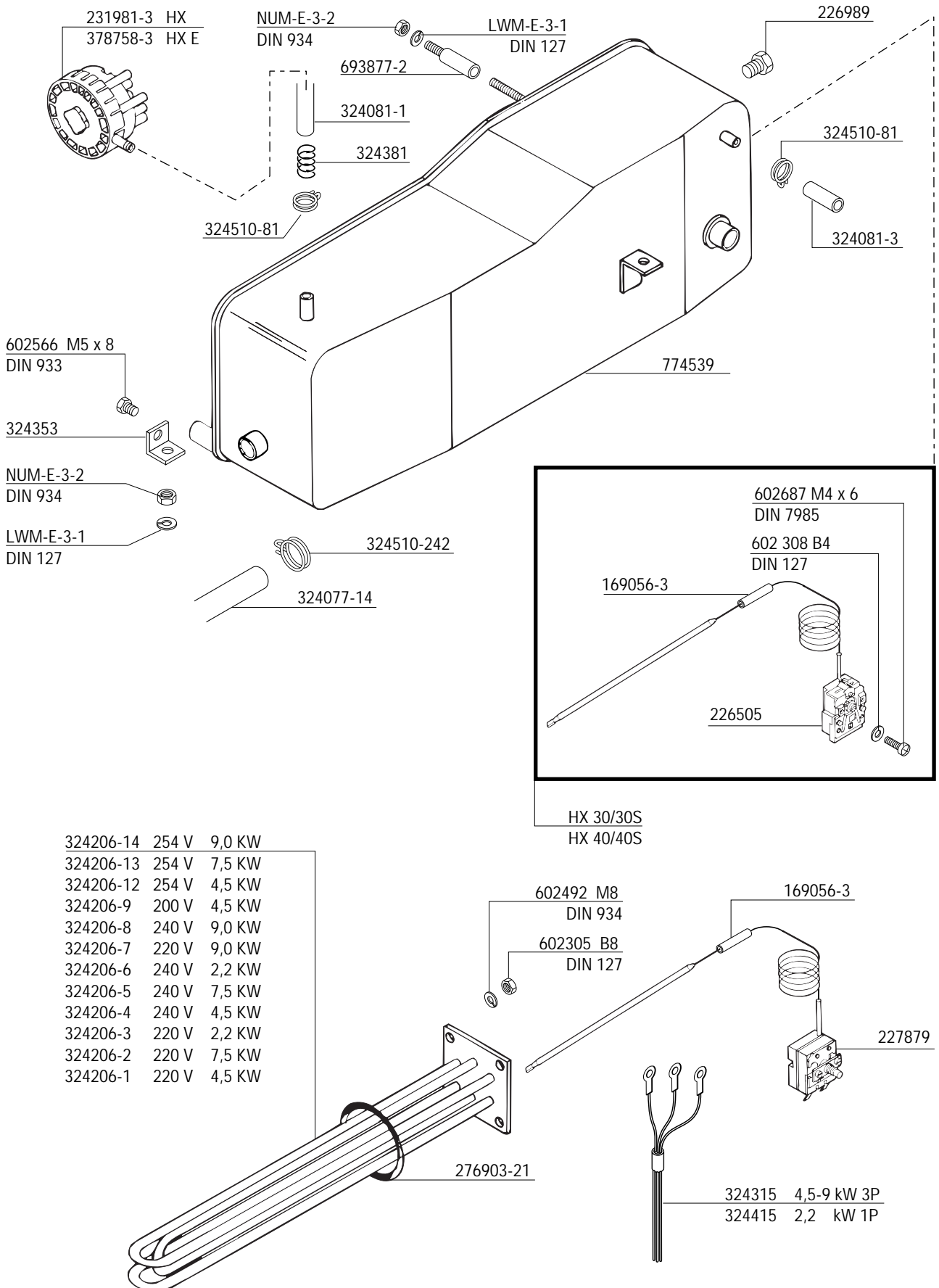
227024

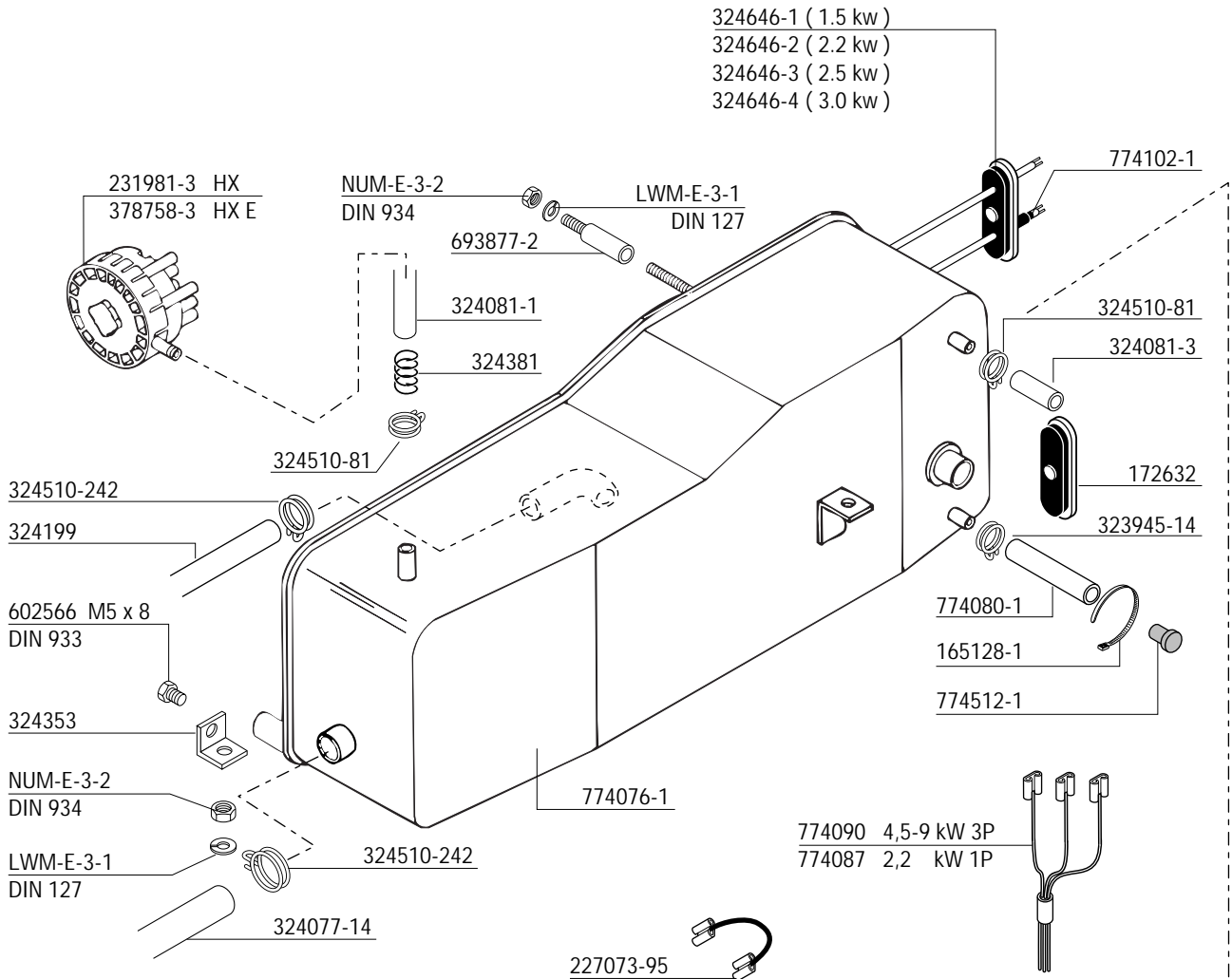


226505 HX
 227879 HX E

602308 B4
 DIN 127

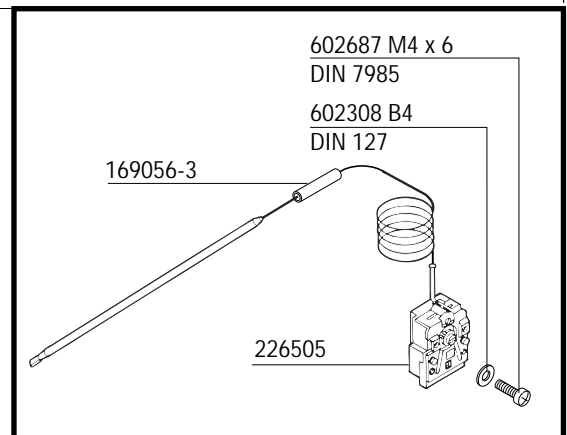
602687 M4 x 6
 DIN 7985

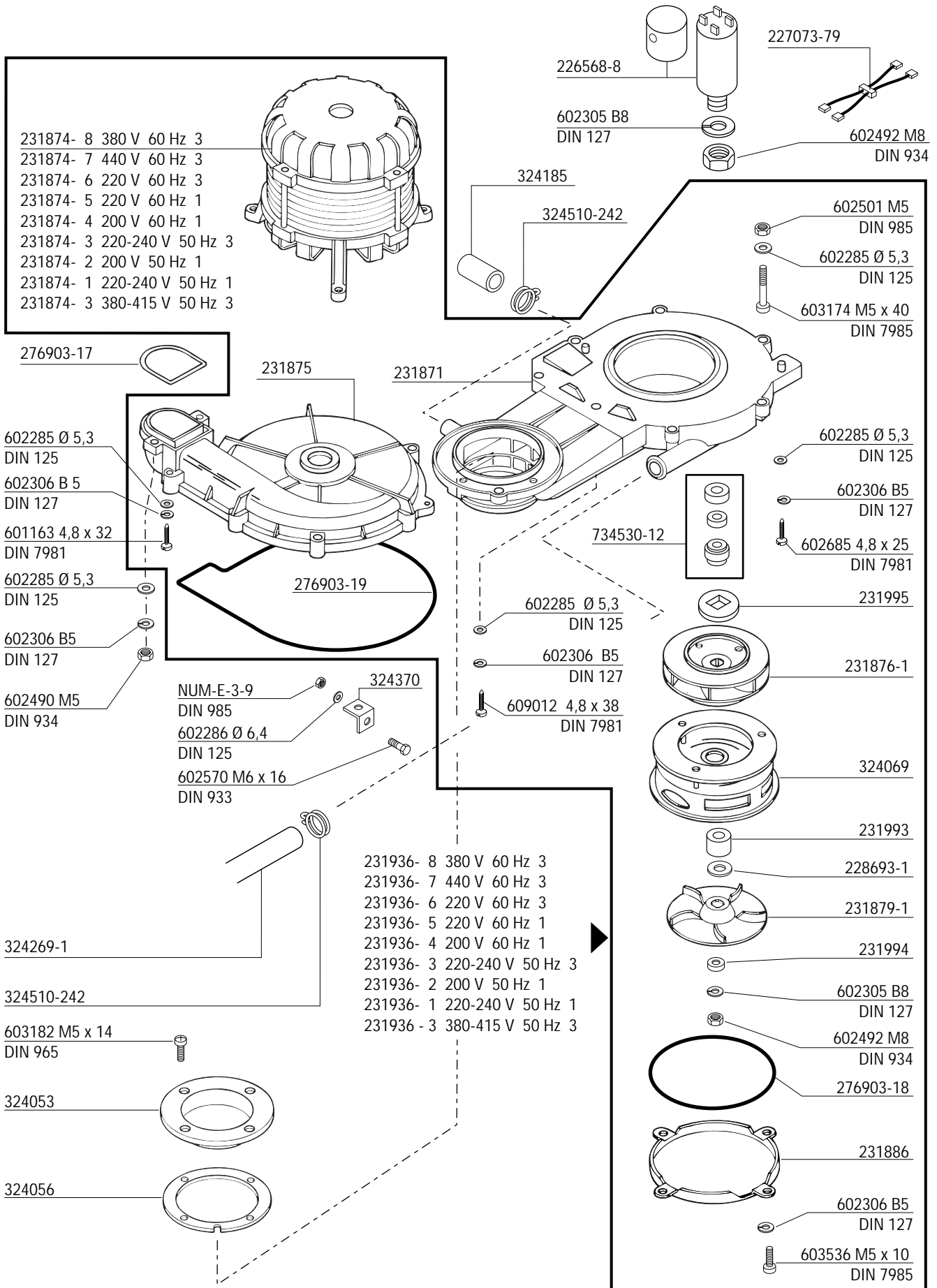


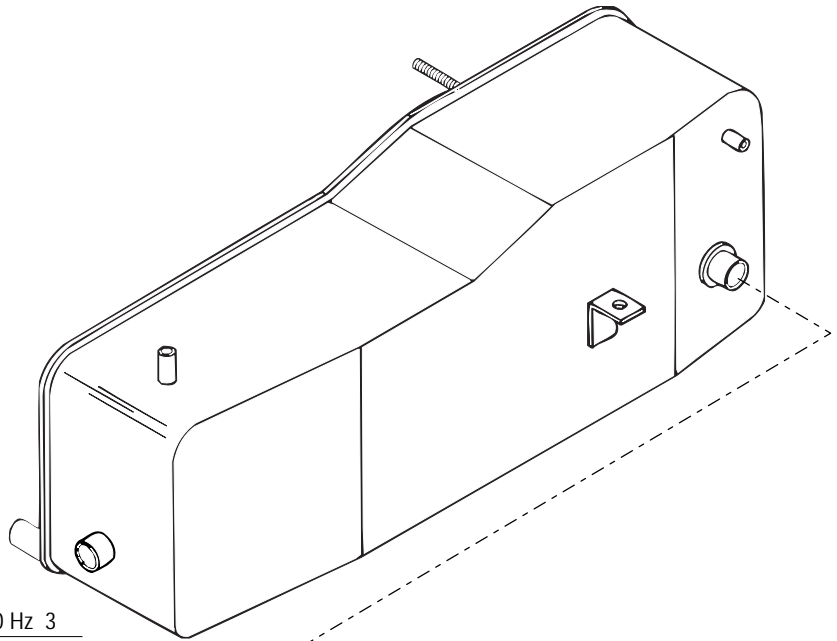


HX 30/30S
HX 40/40S

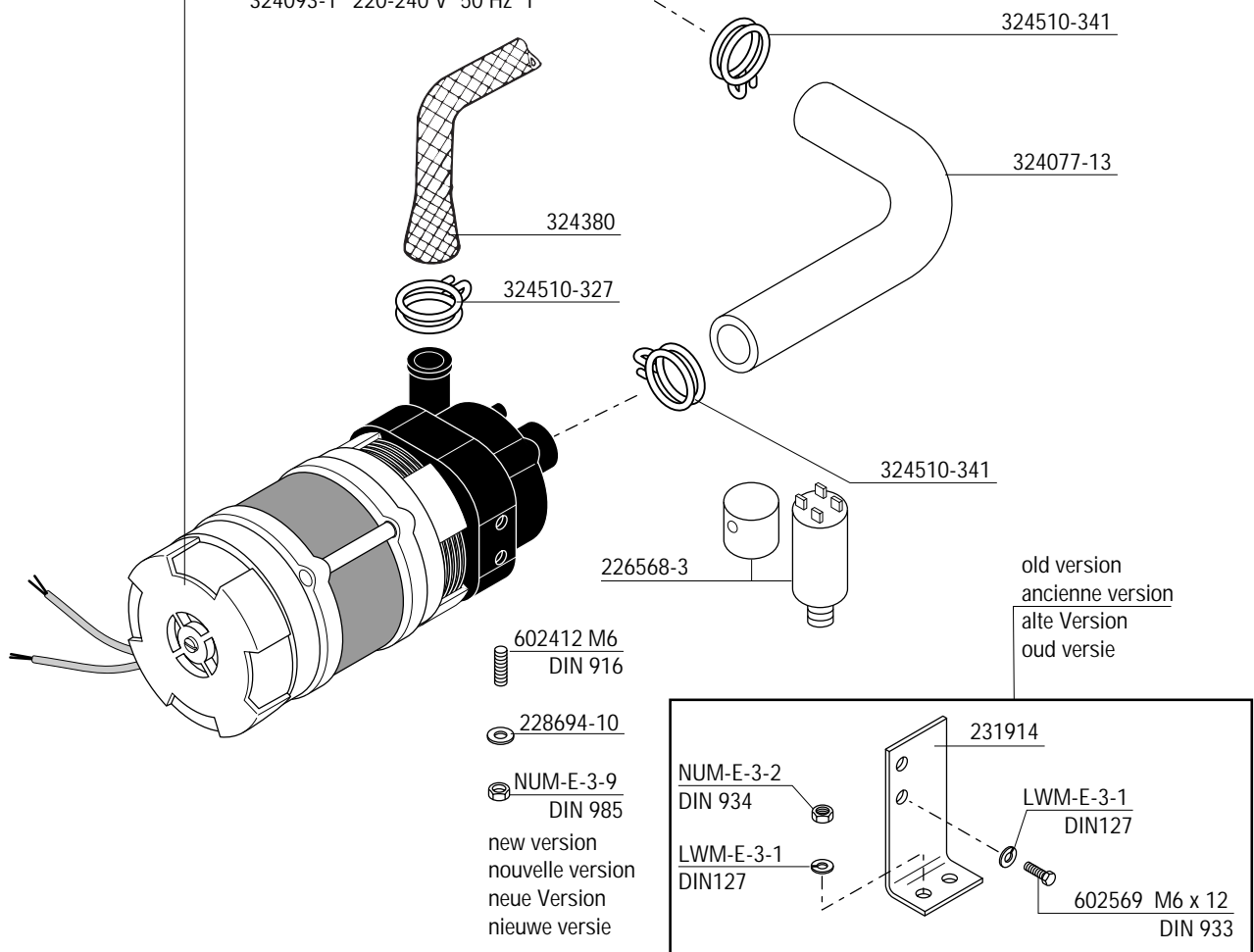
774 539	
Service kit	(heater) incl. items
Composition du kit	(chaudière) incl. pièces
Umbausatz	(Durchlauferhitzer) inkl. Teile
227073-95	774512-1
774090	303340-6
774513-1	774080-1
774102-1	774076-1
165128-1	

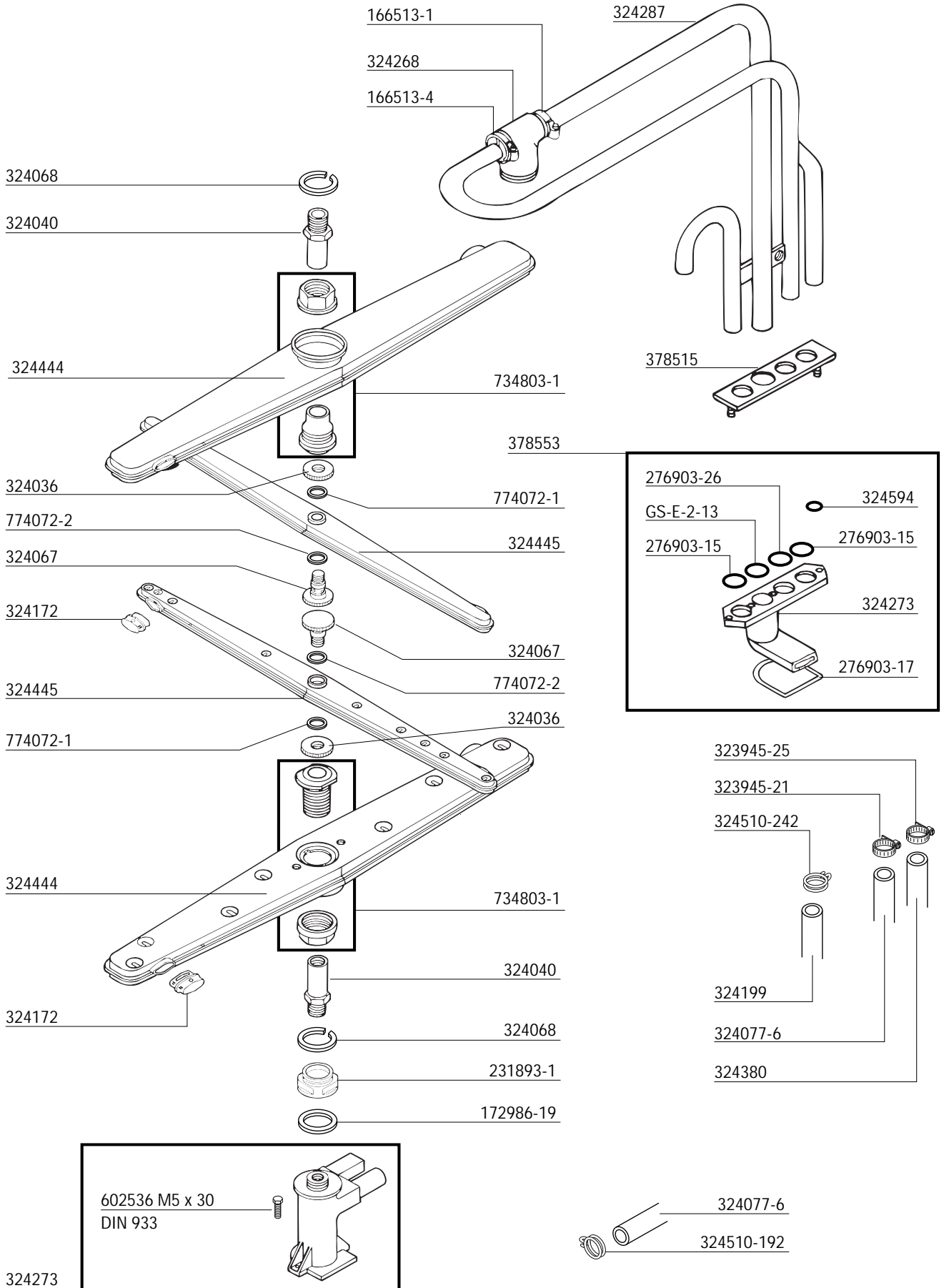


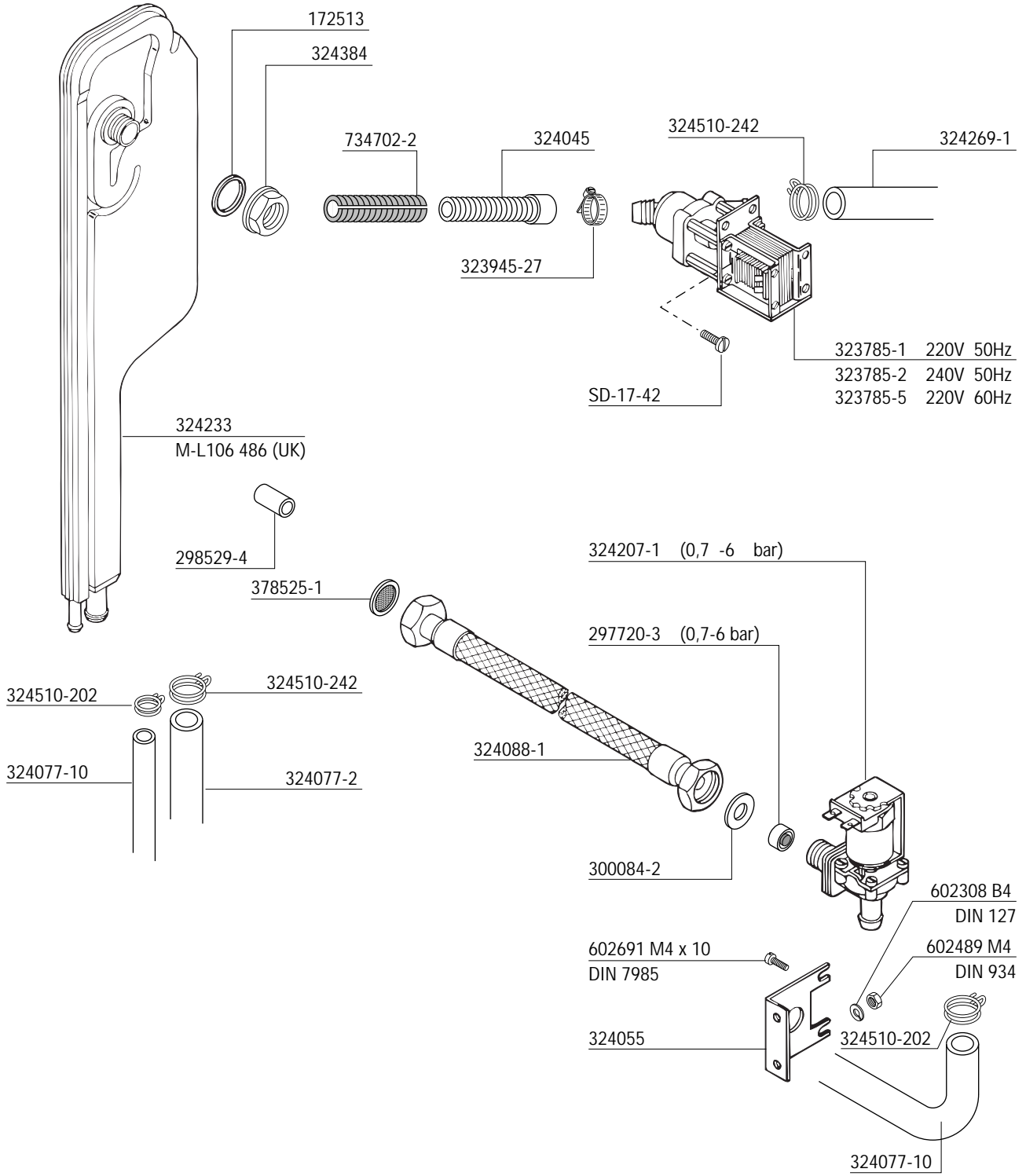




324093-7	440 V	60 Hz	3
324093-6	220 V	60 Hz	3
324093-5	200 V	60 Hz	1
324093-4	380-415 V	50 Hz	3 N
324093-3	220 V	60 Hz	1
324093-2	200 V	50 Hz	1
324093-1	220-240 V	50 Hz	1

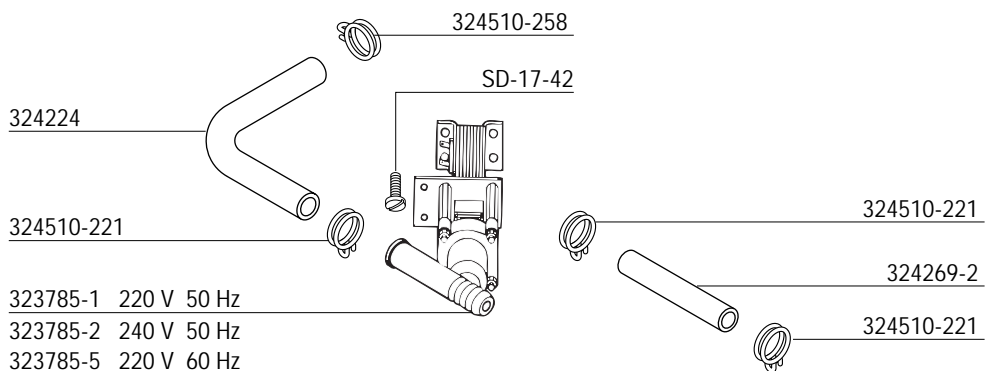
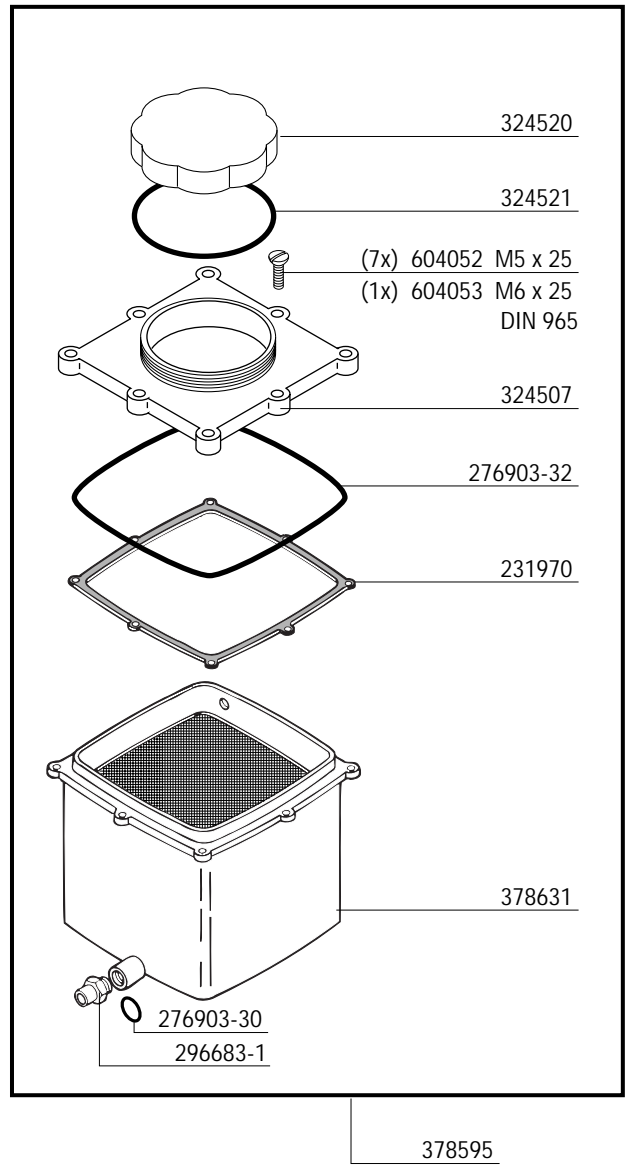
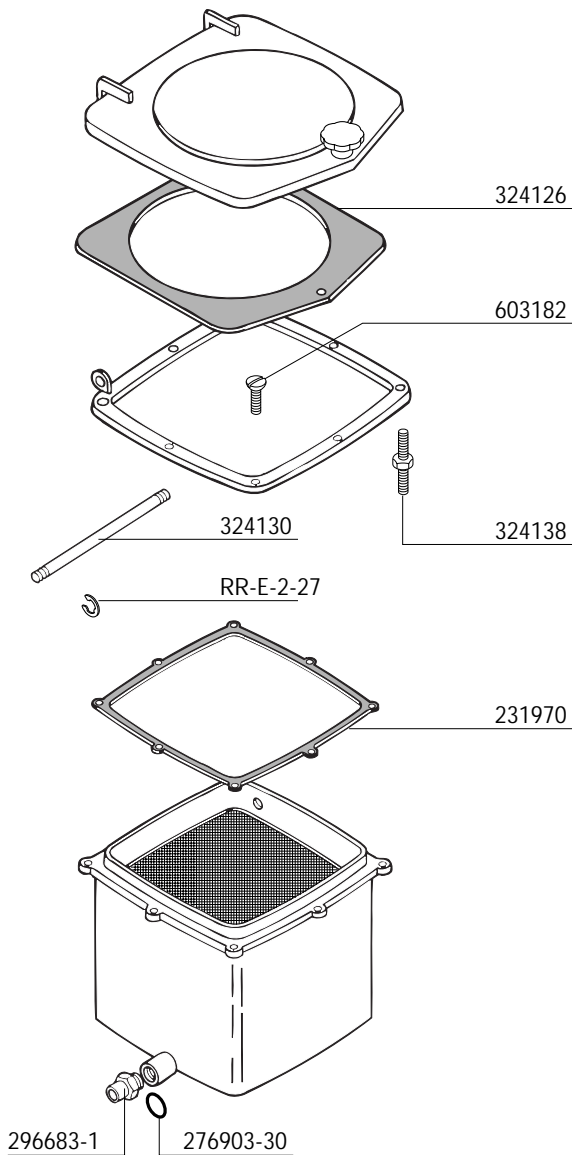


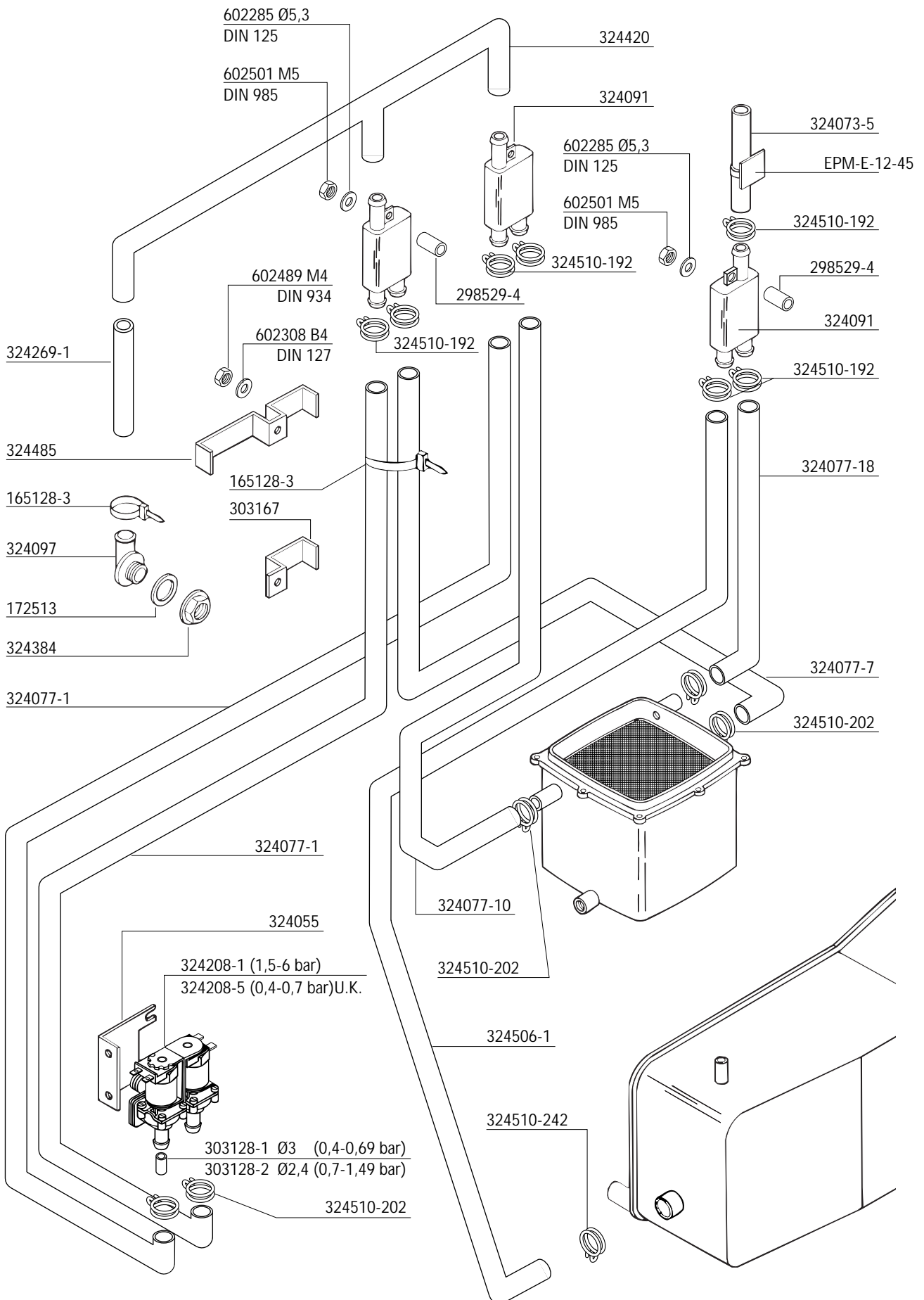




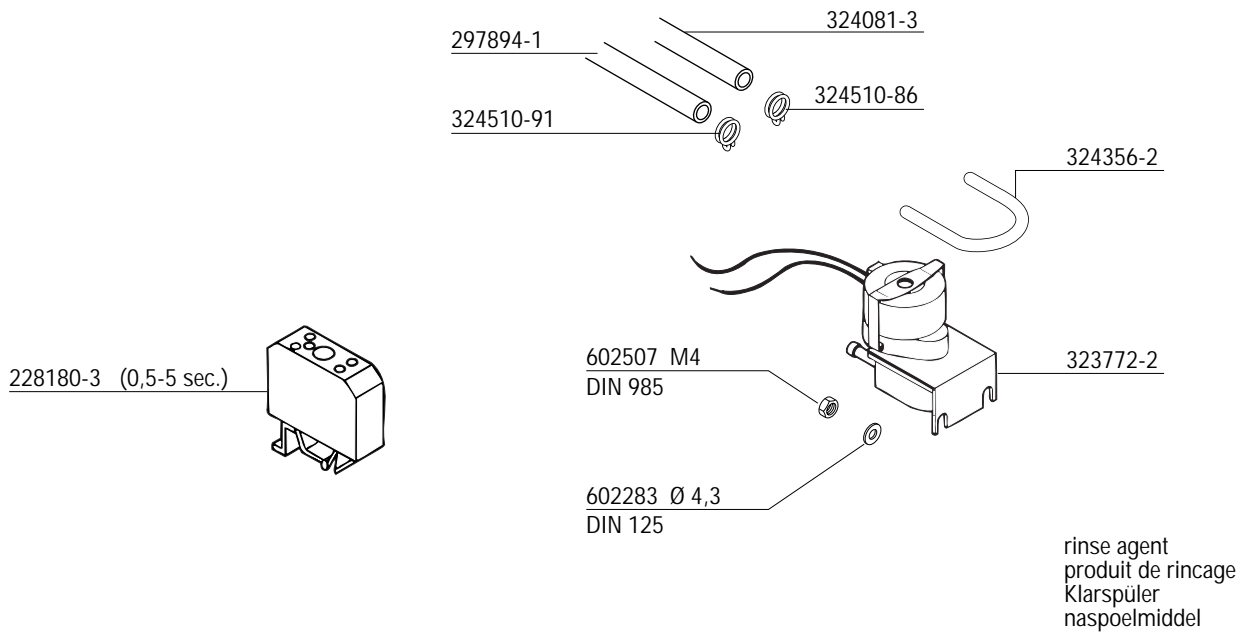
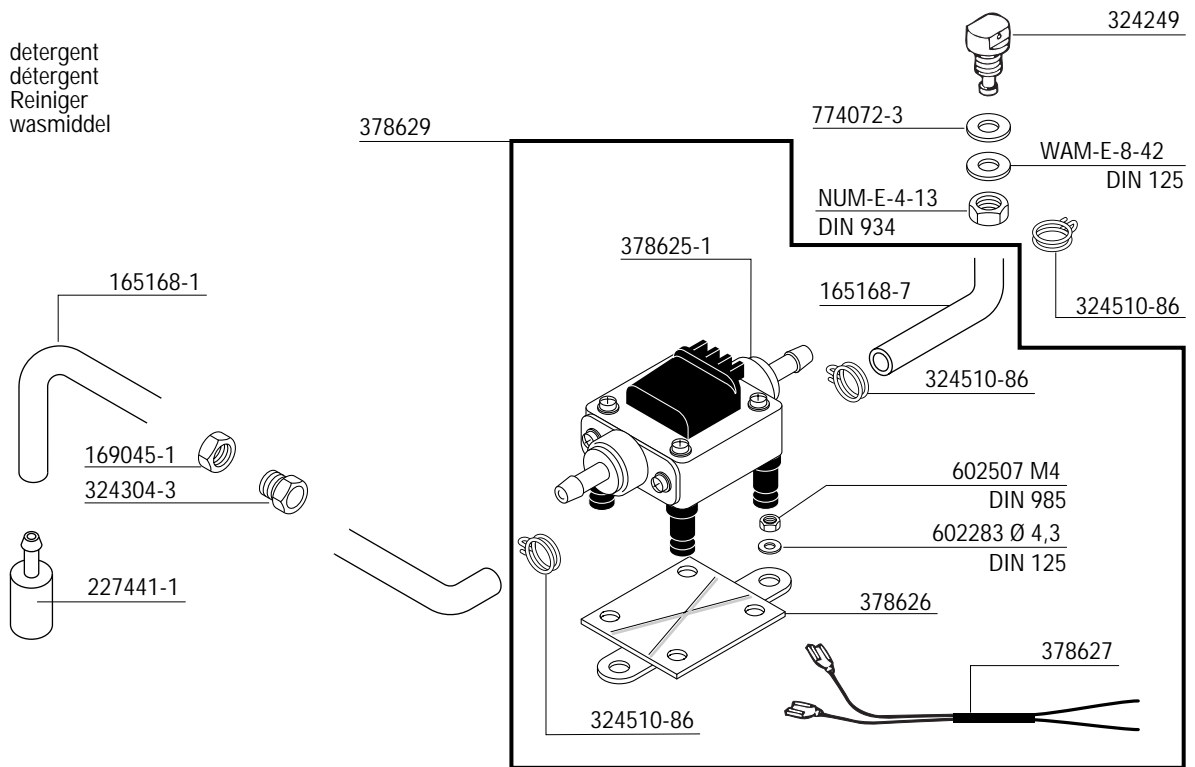
old version
ancienne version
alte Version
oud versie

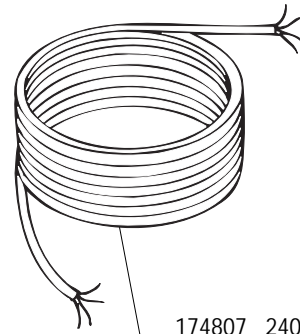
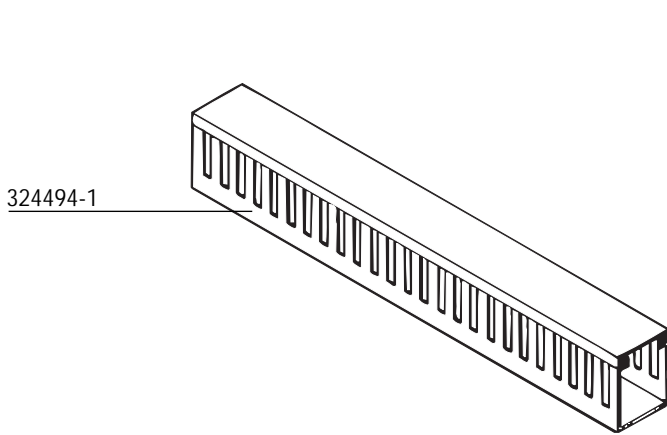
new version
nouvelle version
neue Version
nieuwe versie



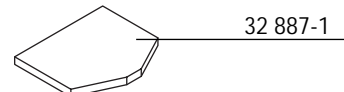
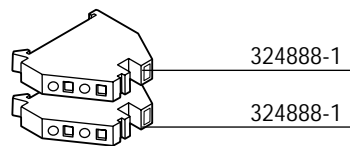
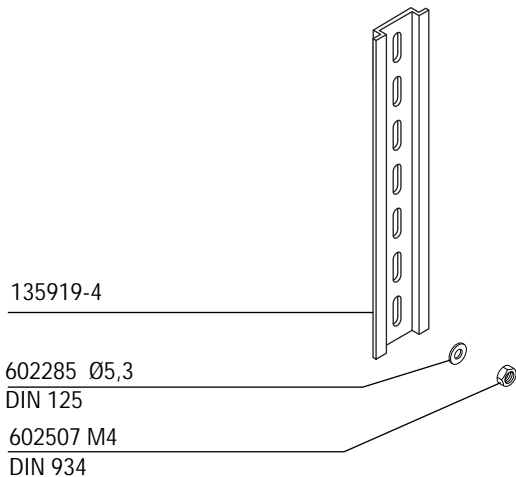
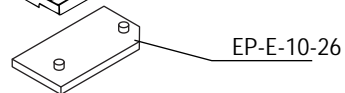
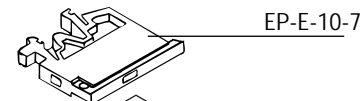
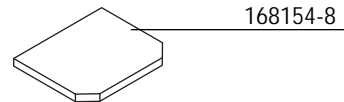
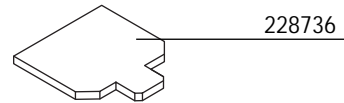
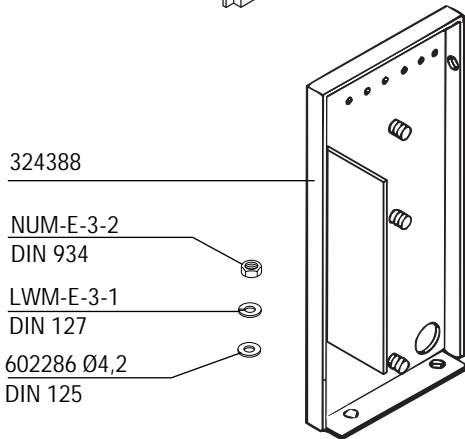
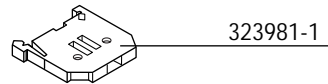
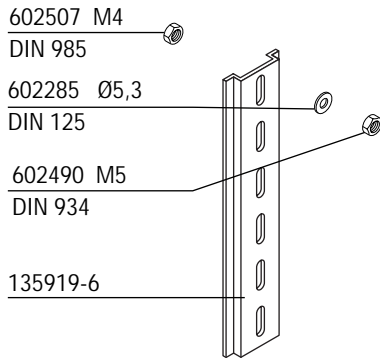


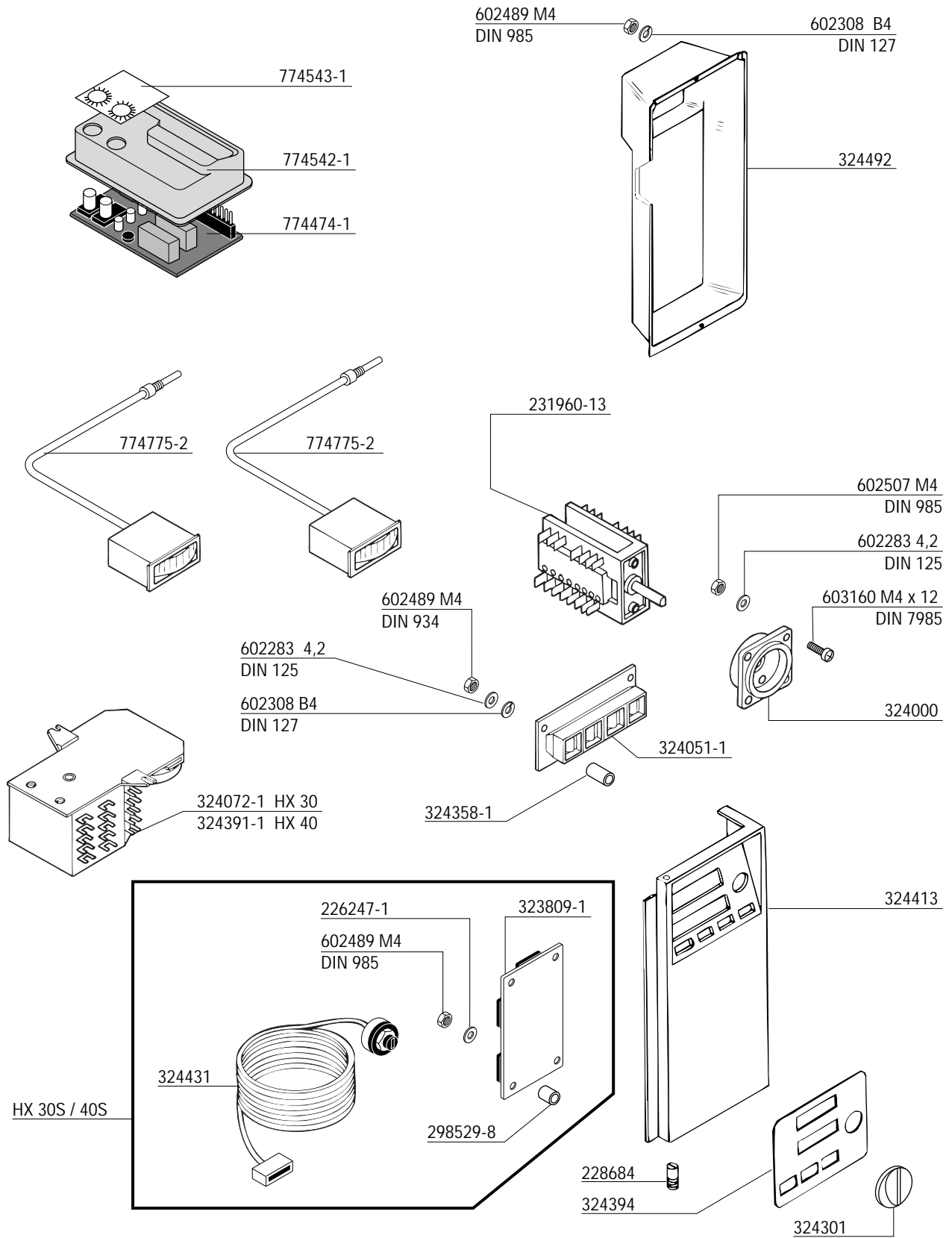
detergent
détergent
Reiniger
wasmiddel

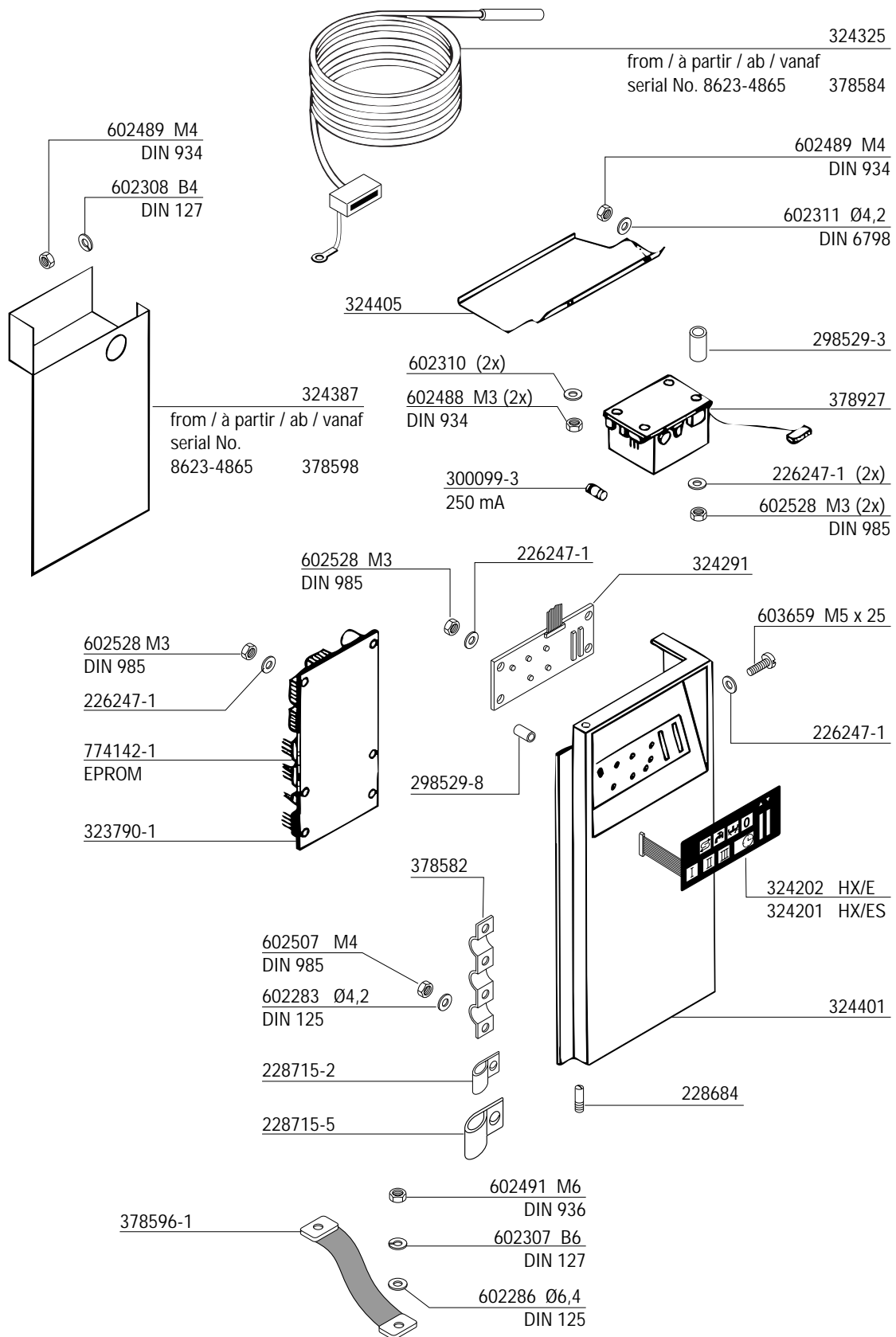




174807 240 V 1Ph 4,5 kW
 324474 220/240 V 1Ph 2,2 kW
 374339-2 380/415 V 3Ph
 374340-2 220/240 V 3Ph







Part Pièce Elektroteil Elektrodeel	Symbol Symbole Symbol Symbol	Contacts Contacts Kontakte Contacte	El. connection El. connexion El. Anschluß El. aansluiting	No. No. Nr. No.
	K1 K3 K2 K5 		220V - 240V 50Hz 240V 60Hz	695507-1
			230V 50 / 60Hz	695507-7
	K4 K8 		220V - 240V 50Hz 240V 60Hz	695537-2
			208V - 220V 60Hz	695537-3
	X16 		6 mm ²	EP-E-10-43
	X16 		6 mm ²	296983-3
	X16 		4 mm ²	167938
	F1 - F3 		4 mm ²	EP-E-10-7
	X17 		2,5 mm ²	324888-1 (HX) 228735-1 (HX-E)
	K6 K7 		3 - 30 sec.	228180-1
			0,5 - 5 sec.	228180-3
	F1 - F3 		250V 6,3A	226660-3
	T1 		220V - 240V 50 / 60 Hz	167231-1

Electrical parts not shown see wiring diagram.

Pour les pièces électriques non apparentes voir schéma de câblage.

Nicht gezeigte Elektroteile siehe Schaltplan.

Raadpleeg het elektrisch schema voor de niet afgebeelde elektrische componenten.